

OVERVIEW

The SM8142 is a transformer-less electroluminescent (EL) driver IC, capable of driving sheets up to 30cm² in size. It employs a high-efficiency driver output circuit configuration to control power dissipation. It is available in ultra-small 8-pin SON (Small Outline Non-leaded) packages*, making possible the construction of small, thin, low-power driver units.

* : SM8142xD

FEATURES

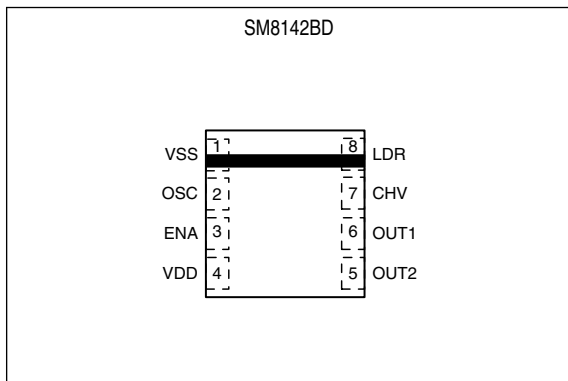
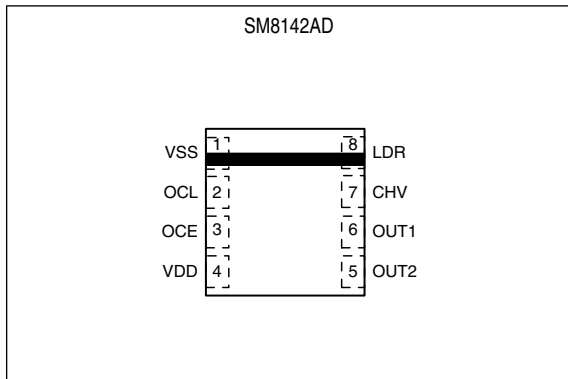
- Dedicated EL driver
- Noise-less smooth drive waveform
- High-efficiency output circuit
- Two oscillator circuits built-in (SM8142A)
- Stand-by function (SM8142B)
- Stable temperature characteristics
- Ultra-small package
- 1.6 to 5.5V supply voltage
- 0.3mA typ. ($V_{DD} = 3.0V$) current consumption (excluding coil current)
- 200Vp-p maximum EL driver voltage
- 31 to 1000Hz EL drive frequency range
- 0.22mH minimum coil inductance

ORDERING INFORMATION

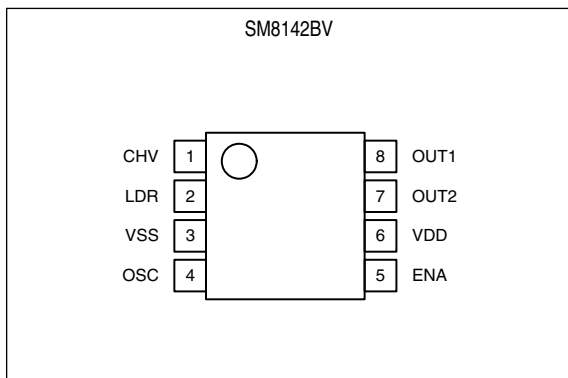
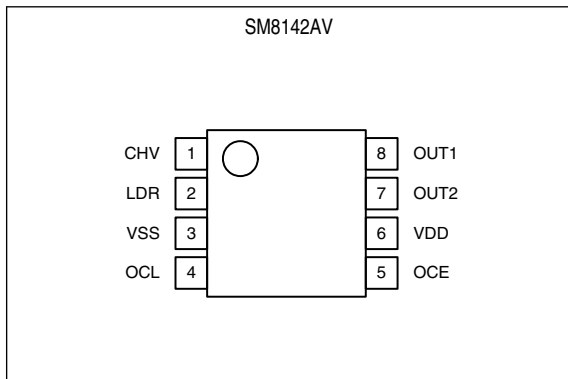
Device	Package
SM8142AD	8-pin SON
SM8142BD	8-pin SON
SM8142AV	8-pin VSOP
SM8142BV	8-pin VSOP

PINOUT (Top view)

■ 8-pin SON

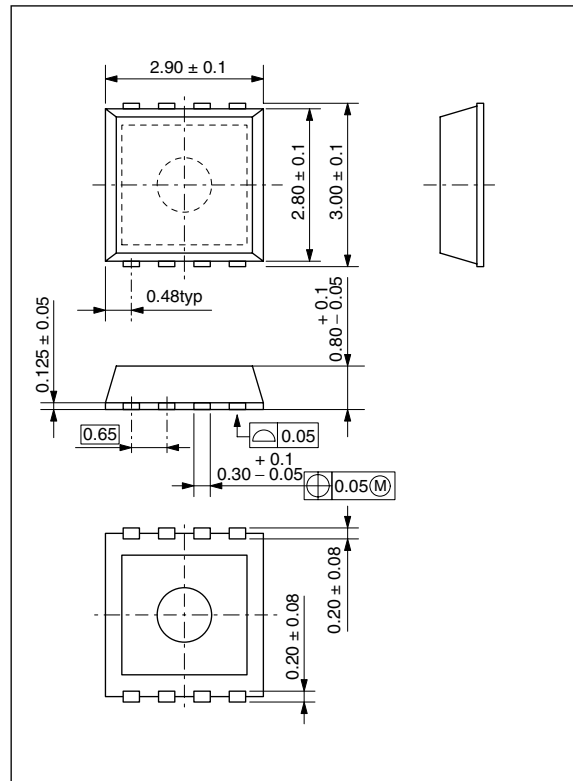


■ 8-pin VSOP

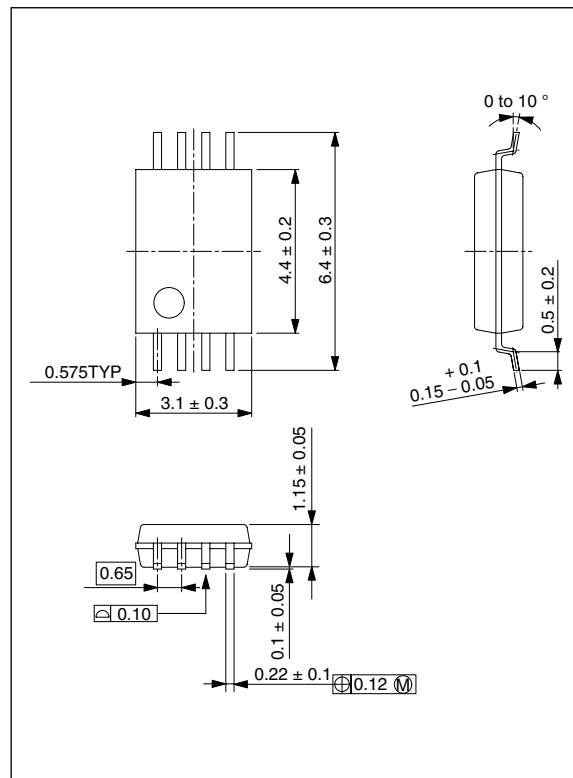


PACKAGE DIMENSIONS (Unit: mm)

■ 8-pin SON

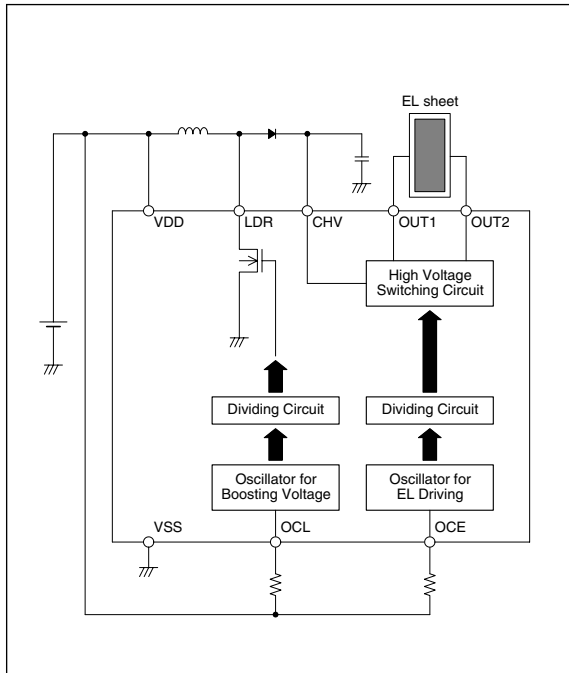


■ 8-pin VSOP

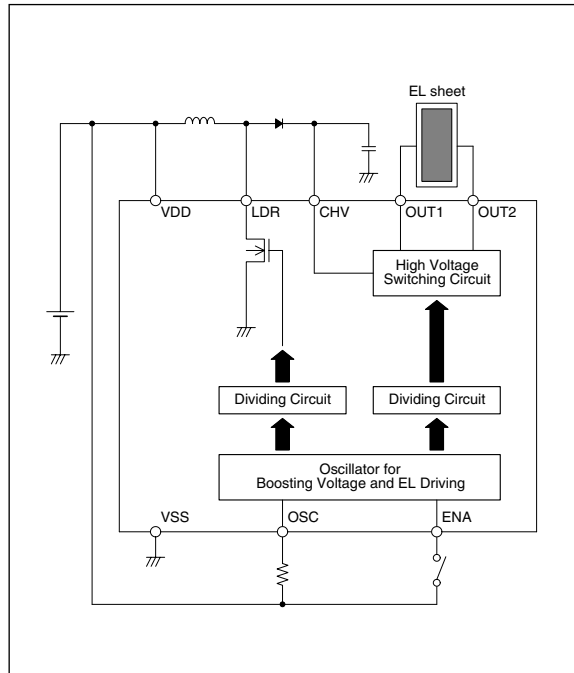


BLOCK DIAGRAM

■ SM8142A



■ SM8142B



PIN DESCRIPTION

Pin number		Ver.	Name	I/O	Function
VSOP-8	SON-8				
1	7	A/B	CHV	I	High-voltage DC input
2	8	A/B	LDR	O	Booster coil driver output
3	1	A/B	VSS	-	Ground
4	2	A	OCL	I	Coil driver oscillator (oscillator frequency determined by external resistor)
		B	OSC	I	Coil and EL driver oscillator (oscillator frequency determined by external resistor)
5	3	A	OCE	I	EL driver oscillator (oscillator frequency determined by external resistor)
		B	ENA	Ip ¹	Enable input (HIGH: enable, LOW: disable)
6	4	A/B	VDD	-	Supply
7	5	A/B	OUT2	O	Output 2
8	6	A/B	OUT1	O	Output 1

1. Built-in pull-down resistor

SPECIFICATIONS

Absolute Maximum Ratings

Parameter	Symbol	Condition	Rating	Unit
Supply voltage range	V_{DD}		- 0.3 to 7.0	V
Input voltage range	V_{IN}	All Input pins	$V_{SS} - 0.3$ to $V_{DD} + 0.3$	V
Output voltage	V_{CHV}	CHV pin	0.5 to 120	V
	V_{LDR}	LDR pin	0.5 to 120	V
	$V_{OUT1/2}$	OUT1, OUT2 pin	0.5 to 120	V
Power dissipation	P_D	$T_a \leq 85^\circ\text{C}$	100	mW
Storage temperature range	T_{stg}		- 55 to 125	$^\circ\text{C}$

Recommended Operating Conditions

Parameter	Symbol	Condition	Rating			Unit
			min	typ	max	
Supply voltage range	V_{DD2}		1.6	3.0	5.5	V
Operating temperature	T_{OPR}		- 40	-	85	$^\circ\text{C}$
Operating current ¹	I_{DD2}	Including coil current, $V_{DD} = 3.0\text{V}$	-	-	60	mA
		Including coil current, $V_{DD} = 5.0\text{V}$	-	-	36	
Current limit resistance	R_{CHV}	$V_{DD} = 1.6$ to 4.0V	-	0	-	k Ω
		$V_{DD} = 4.0$ to 5.5V	10	20	-	
	R_{OUT}	$EL \leq 30\text{cm}^2$	-	0	-	k Ω
		$EL \geq 30\text{cm}^2$	-	1.0	-	
Coil inductance	L_{LDR}	$f_{LDR} = 64\text{kHz}$	-	0.47	-	mH

1. Max value is as same as Absolute Maximum Ratings.

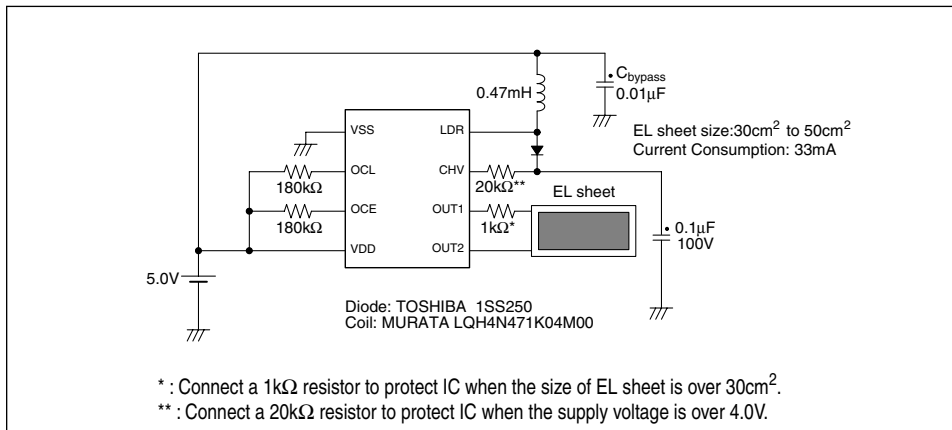
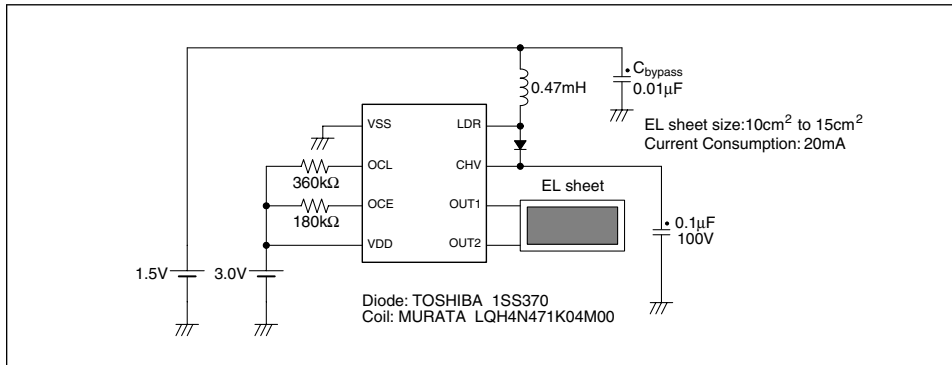
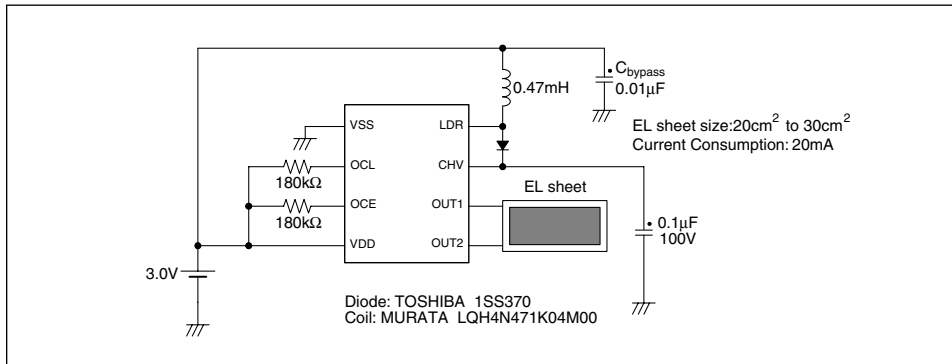
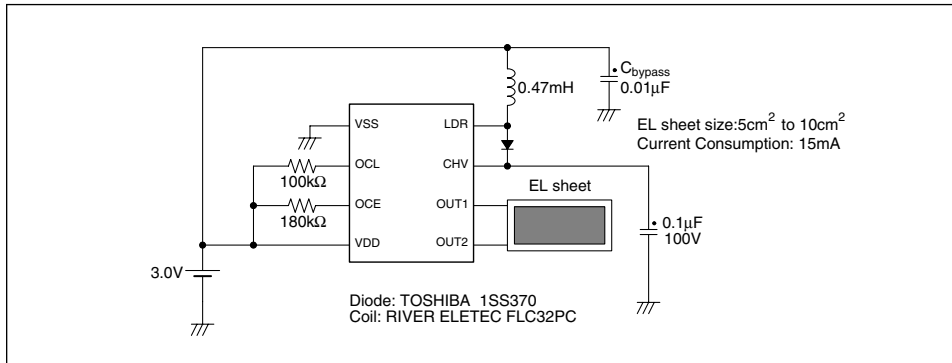
DC Characteristics

$V_{DD} = 3.0V$, $T_a = 25^\circ C$ unless otherwise noted.

Parameter	Ver.	Symbol	Condition	Rating			Unit
				min	typ	max	
Supply voltage	A/B	V_{DD}		1.6	3.0	5.5	V
CHV output voltage	A/B	V_{CHV}		0.5	–	100	V
OUT1, OUT2 HIGH-level output voltage	A/B	V_{OUTH}		–	–	100	V
OUT1, OUT2 LOW-level output voltage	A/B	V_{OUTL}		–	–	0.5	V
LDR output resistance	A/B	R_{LDR}	$I_{LDR} = 50mA$	–	8.0	12.0	Ω
OCE oscillator frequency	A	f_{OCE1}	$R_{OCE} = 180k\Omega$	205	256	307	kHz
OCE oscillator frequency range		f_{OCE2}		32	–	1024	
OCL oscillator frequency	A	f_{OCL1}	$R_{OCL} = 180k\Omega$	205	256	307	kHz
OCL oscillator frequency range		f_{OCL2}		32	–	1024	
OSC oscillator frequency	B	f_{OSC1}	$R_{OSC} = 180k\Omega$	205	256	307	kHz
OSC oscillator frequency range		f_{OSC2}		32	–	1024	
OUT1, OUT2 output frequency	A/B	f_{OUT1}	$R_{OCE}/R_{OSC} = 180k\Omega$	200	250	300	Hz
OUT1, OUT2 output frequency range		f_{OUT2}		31	–	1000	
LDR inductance driver frequency	A/B	f_{LDR1}	$R_{OCL}/R_{OSC} = 180k\Omega$	51	64	77	kHz
LDR inductance driver frequency range		f_{LDR2}		8	–	256	
ENA HIGH-level input voltage	B	V_{ENAH}	ENA = "H", $V_{DD} = 1.6$ to $5.5V$	$V_{DD} - 0.5$	–	$V_{DD} + 0.3$	V
ENA LOW-level input voltage		V_{ENAL}	ENA = "L", $V_{DD} = 1.6$ to $5.5V$	$V_{SS} - 0.3$	–	$V_{SS} + 0.5$	
ENA input current	B	I_{ENAH}	$V_{ENAH} = V_{DD} = 3.0V$	2.0	4.0	6.0	μA
Operating current	A/B	I_{DD1}	Excluding coil current	–	–	0.5	mA
Stand-by current	B	I_{STB}	ENA = "L"	–	–	1.0	μA

TYPICAL APPLICATIONS

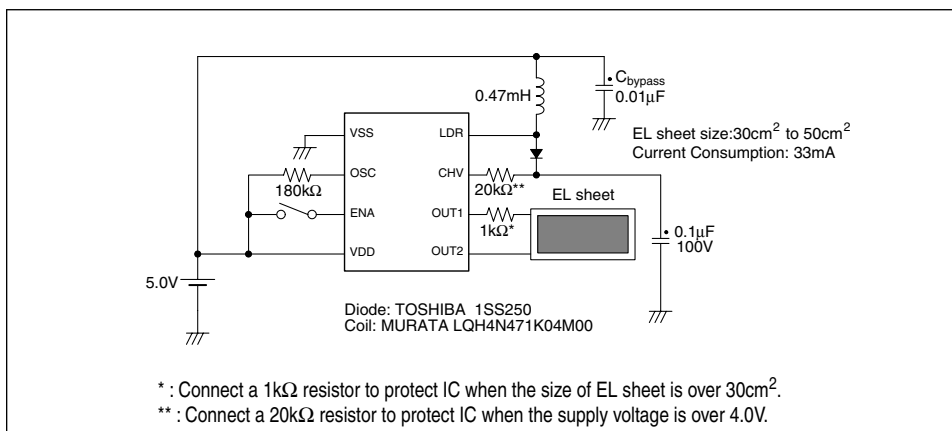
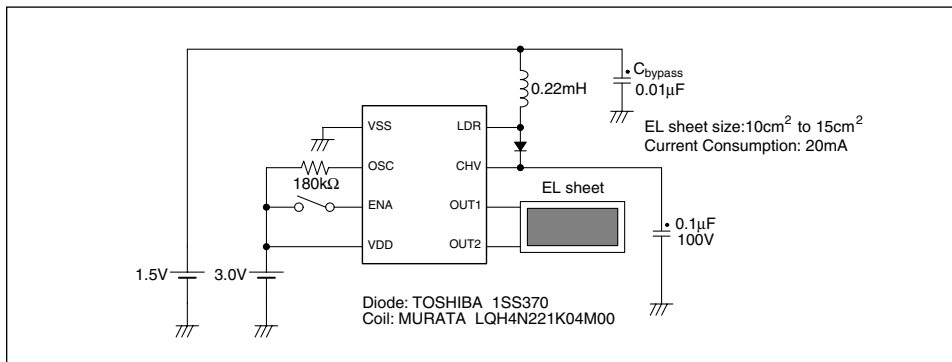
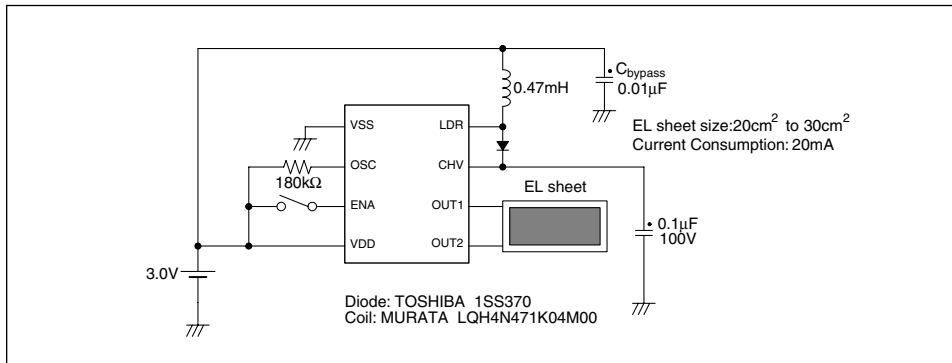
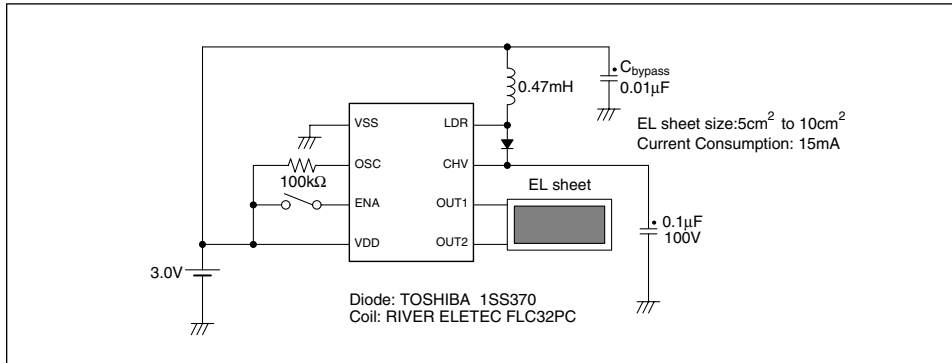
■ SM8142AD



Note) Do not operate the SM8142 with the EL sheet NOT connected (no load to OUT1/OUT2) since the IC will be damaged.

SM8142

■ SM8142BD



Note) Do not operate the SM8142 with the EL sheet NOT connected (no load to OUT1/OUT2) since the IC will be damaged.

Please pay your attention to the following points at time of using the products shown in this document.

The products shown in this document (hereinafter "Products") are not intended to be used for the apparatus that exerts harmful influence on human lives due to the defects, failure or malfunction of the Products. Customers are requested to obtain prior written agreement for such use from SEIKO NPC CORPORATION (hereinafter "NPC"). Customers shall be solely responsible for, and indemnify and hold NPC free and harmless from, any and all claims, damages, losses, expenses or lawsuits, due to such use without such agreement. NPC reserves the right to change the specifications of the Products in order to improve the characteristic or reliability thereof. NPC makes no claim or warranty that the contents described in this document dose not infringe any intellectual property right or other similar right owned by third parties. Therefore, NPC shall not be responsible for such problems, even if the use is in accordance with the descriptions provided in this document. Any descriptions including applications, circuits, and the parameters of the Products in this document are for reference to use the Products, and shall not be guaranteed free from defect, inapplicability to the design for the mass-production products without further testing or modification. Customers are requested not to export or re-export, directly or indirectly, the Products to any country or any entity not in compliance with or in violation of the national export administration laws, treaties, orders and regulations. Customers are requested appropriately take steps to obtain required permissions or approvals from appropriate government agencies.

The logo for NPC (Seiko NPC Corporation) consists of the letters 'NPC' in a bold, black, sans-serif font. The 'N' and 'P' are connected at the top, and the 'C' is positioned to the right of the 'P'.

SEIKO NPC CORPORATION

15-6, Nihombashi-kabutocho, Chuo-ku,
Tokyo 103-0026, Japan
Telephone: +81-3-6667-6601
Facsimile: +81-3-6667-6611
<http://www.npc.co.jp/>
Email: sales@npc.co.jp

NC9810KE 2006.04